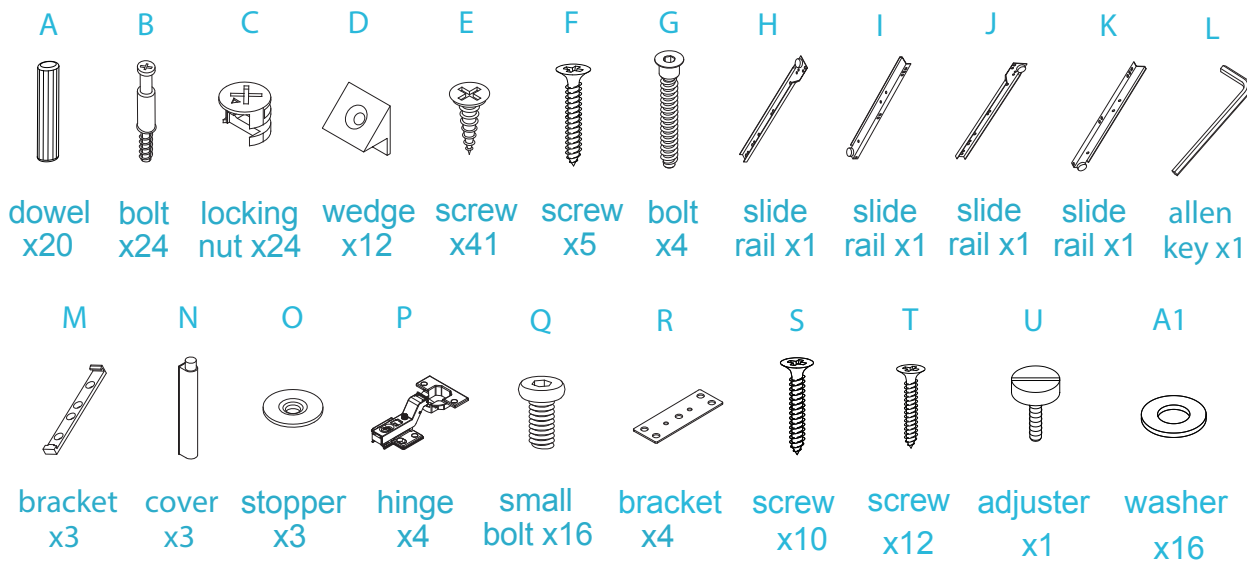


Kennedy Entertainment Unit

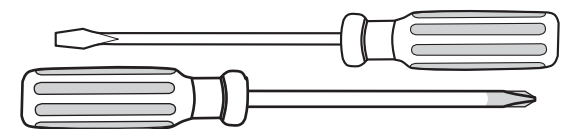
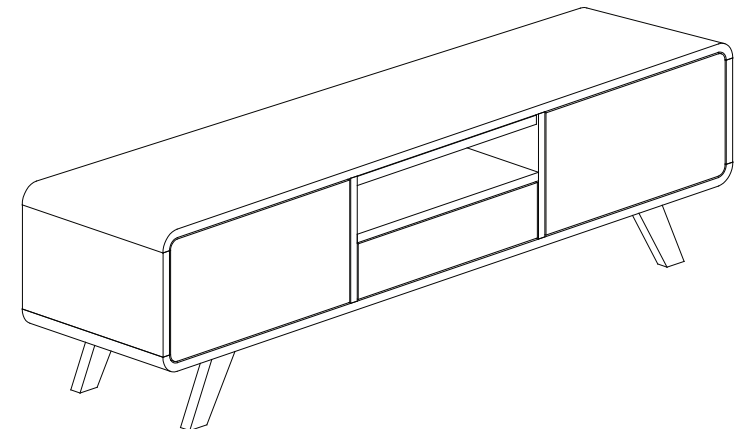
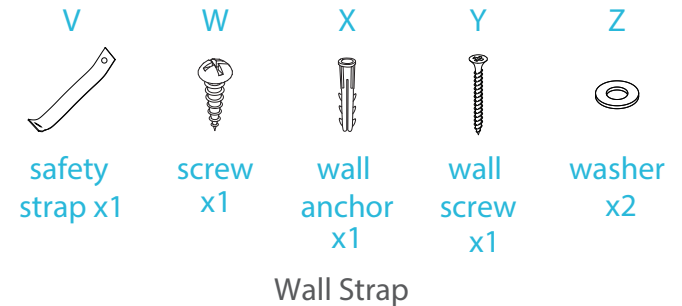
Assembly Instructions

Thank you for your purchase.
Please follow the instructions below for correct assembly.

mocka



Hardware Supplied



Phillips & Flathead screwdrivers required
For quicker assembly, we recommend the
use of a power drill on a low-speed setting.

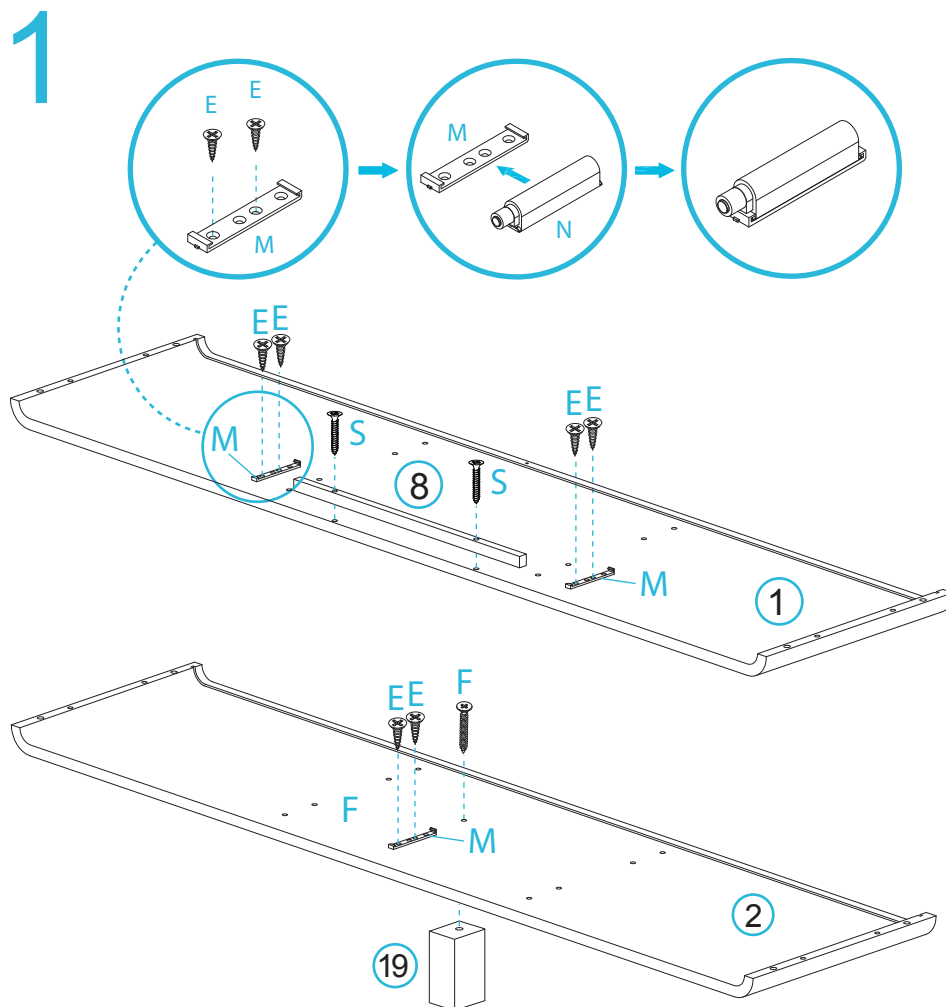
WARNING: Any furniture that is not anchored to a wall has the potential to tip over in certain circumstances, i.e. if a child attempts to climb up on the furniture or in the event of an earthquake. Accordingly, we recommend that all furniture is anchored to a wall. We supply a free safety wall anchor with all furniture sold and we recommend these are used to prevent your product tipping. The fixing device provided should fit most wall types, but please note that different wall materials may require different fixing devices from those supplied.

*We recommend using a Flathead screwdriver to tighten all locking nuts 100% before first use.
Please clear any loose wood from the locking nut holes before inserting the nut to ensure it locks 100%.

Kennedy Entertainment Unit

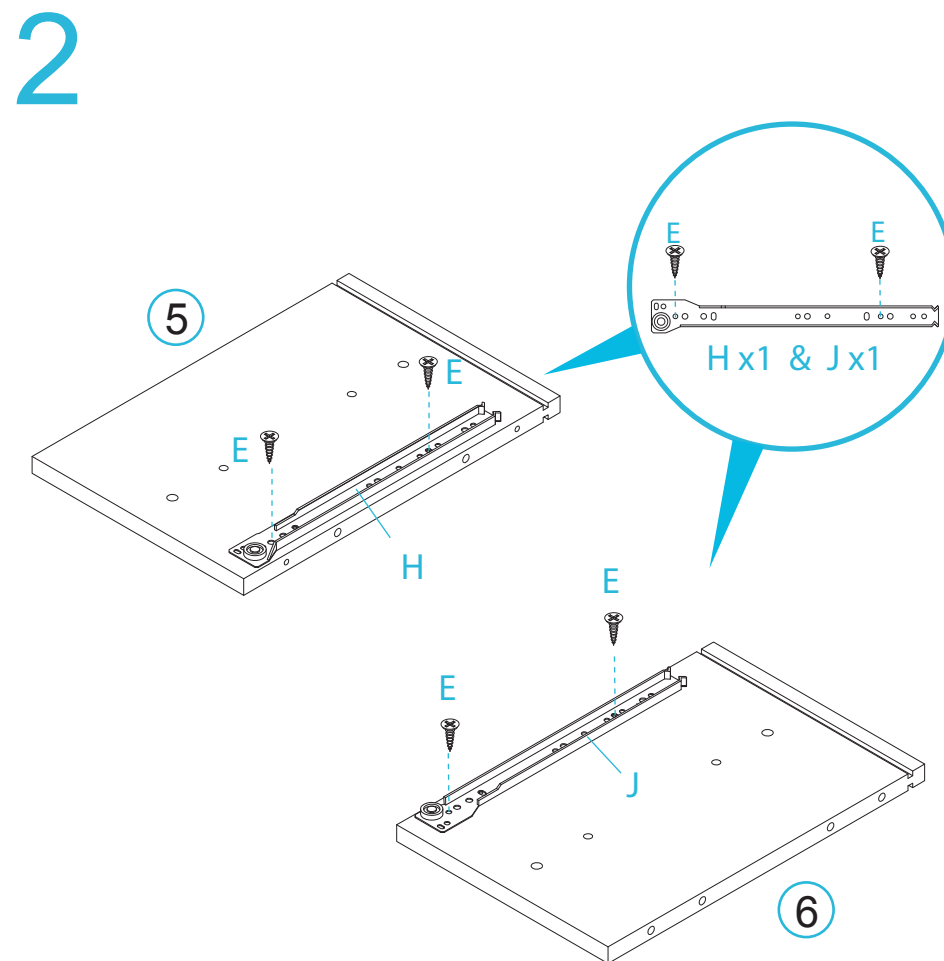
Assembly Instructions

mocka



Attach 2x brackets (M) to panel [1] and secure with 4x screws (E). Place 2x covers (N) over them as shown. Attach panel [8] to panel [1] using 2x screws (S). Attach 1x bracket (M) to panel [2] and secure with 2x screws (E). Place 1x cover (N) over the bracket. Attach the support leg [19] to the underside of panel [2] with 1x screw (F). Tighten with a screwdriver.

mocka.co.nz | mocka.com.au | PO BOX 6171, Maroochydore BC, QLD, 4558



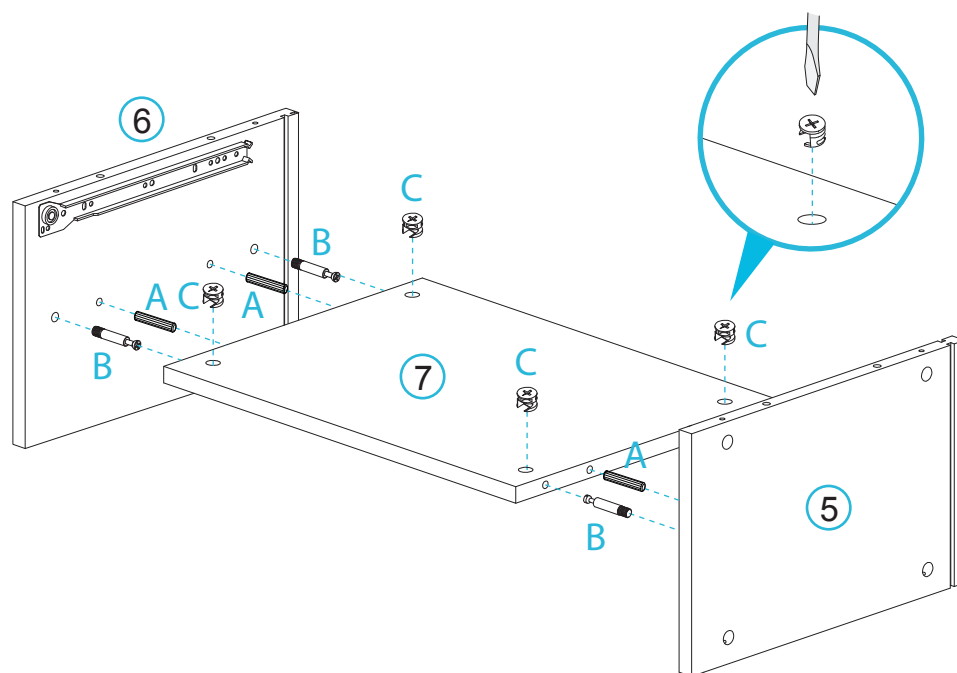
Attach 1x slide rail (H) to panel [5] and secure with 2x screws (E). Attach 1x slide rail (J) to panel [6] and secure with 2x screws (E). Tighten with a screwdriver.

Kennedy Entertainment Unit

Assembly Instructions

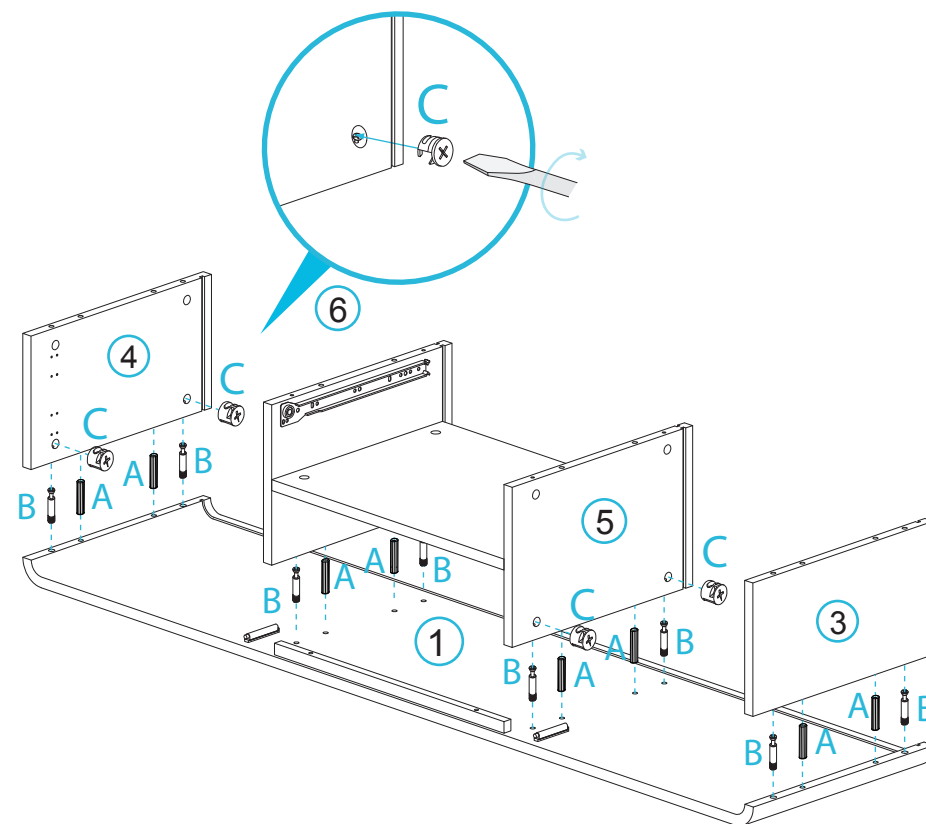
mocka

3



Attach panels [5] and [6] to panel [7] using 4x dowels (A) and 4x bolts (B). Secure with 4x locking nuts (C) and tighten with a screwdriver.

4



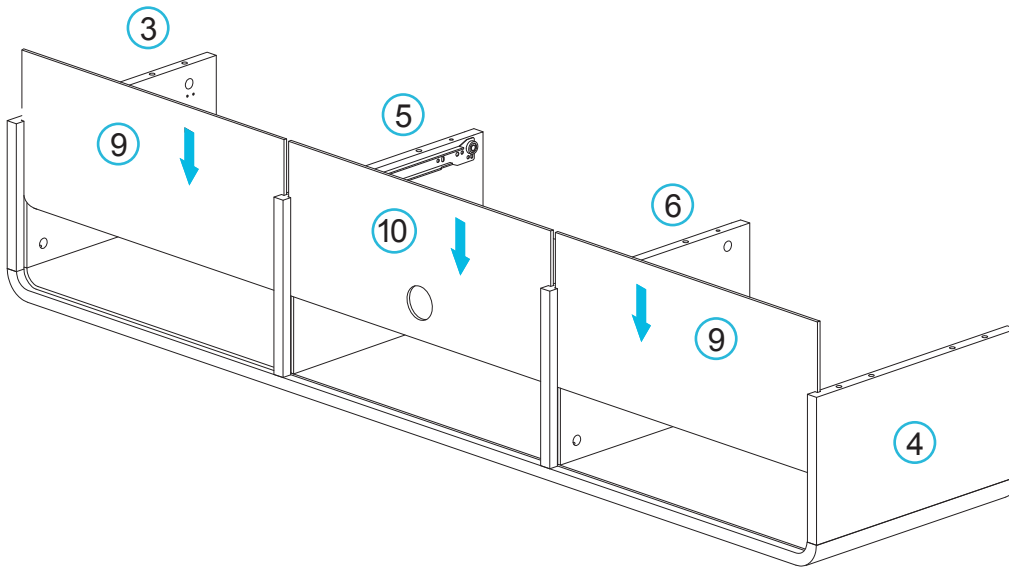
Attach panels [4], [6], [5] and [3] to panel [1] using 8x dowels (A), 8x bolts (B) and secure with 8x locking nuts (C). Tighten with a screwdriver.

Kennedy Entertainment Unit

Assembly Instructions

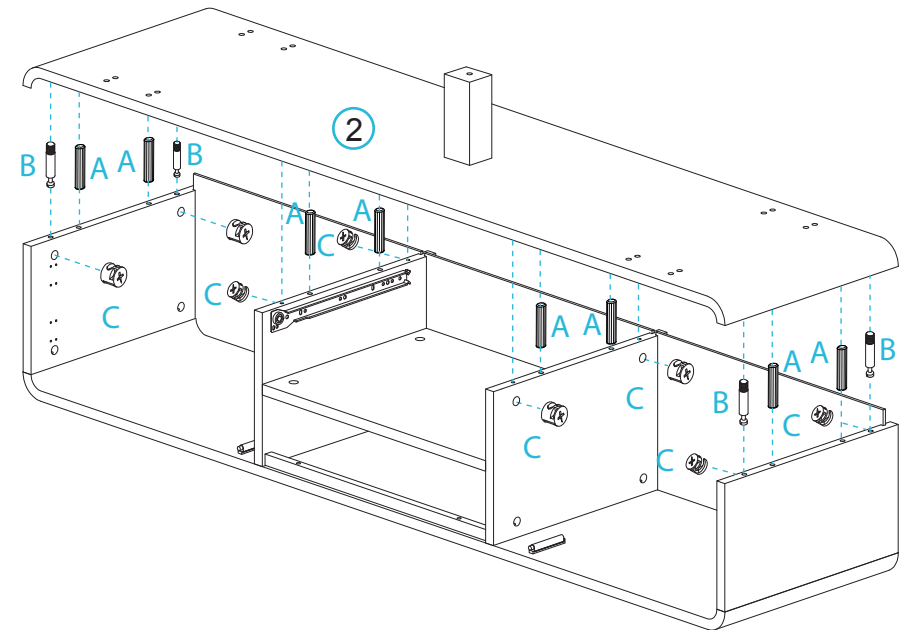
mocka

5



Slide panels [9] and [10] along the grooves between panels [3], [4], [5] and [6] to form the back of the unit.

6

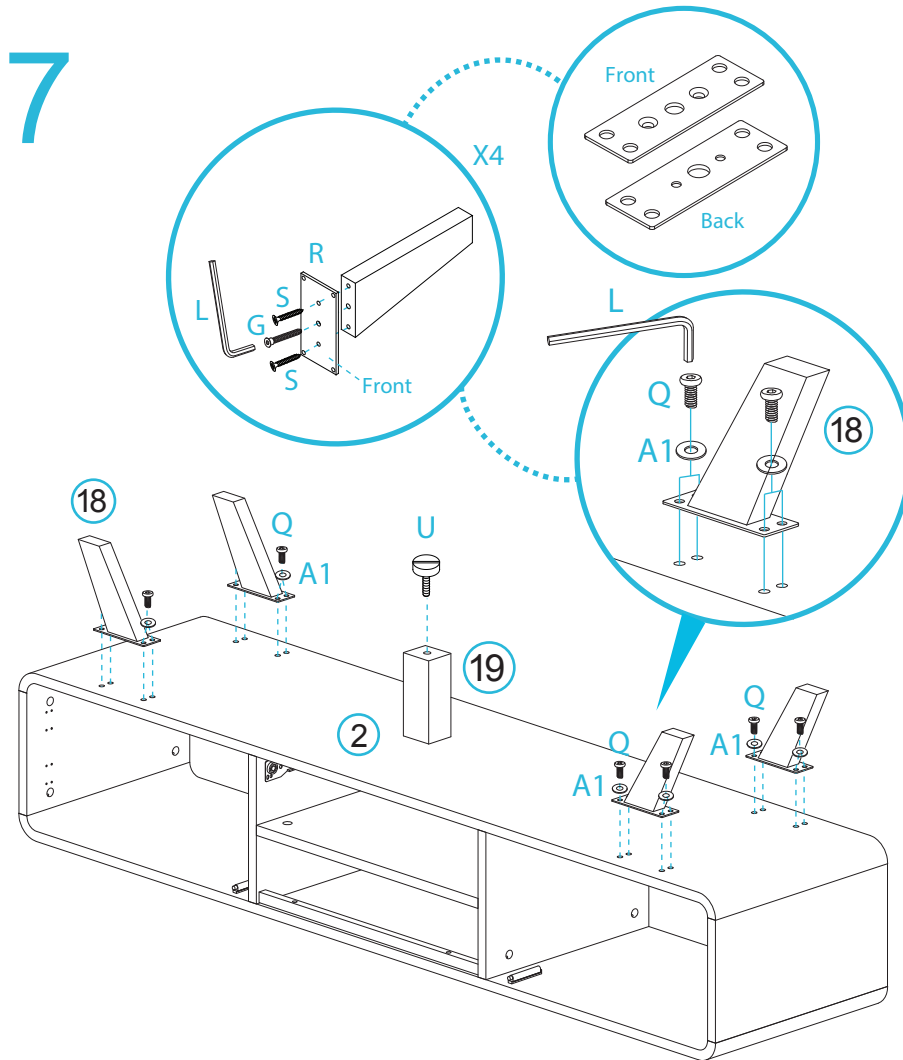


Attach panel [2] to the rest of the unit using 8x dowels (A), 4x bolts (B) and 4x locking nuts (C). Tighten with a screwdriver.

Kennedy Entertainment Unit

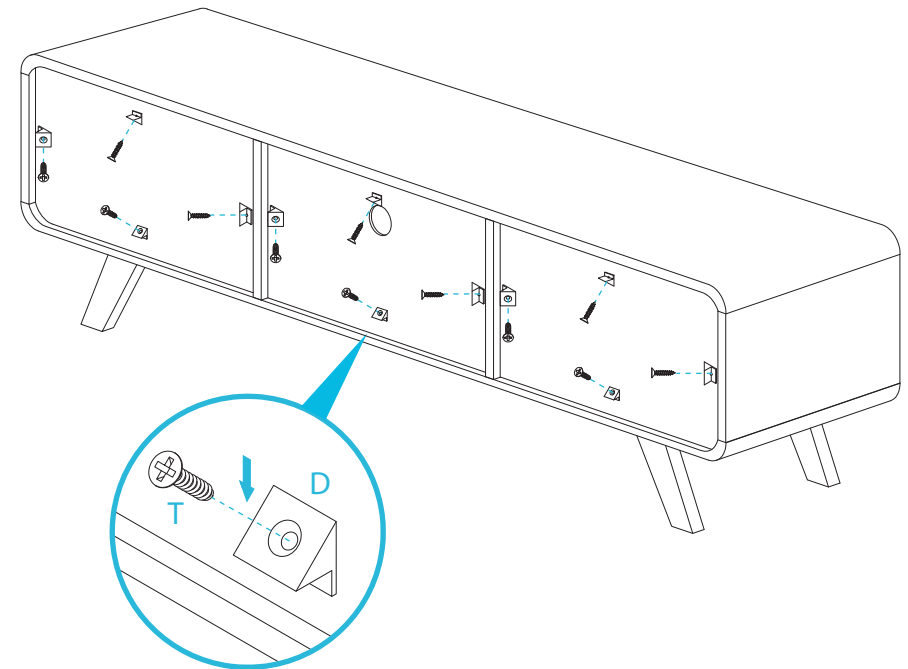
Assembly Instructions

mocka



Attach a leg bracket (R) to each leg [18] using 2x screws (S) and 1x bolt (G). Tighten with a screwdriver and allen key (L). Attach each leg [18] to panel [2] using 4x small bolts (Q) and 4x washers (A1) as shown. Tighten with the allen key (L). Insert the adjuster (U) into the middle support.

8



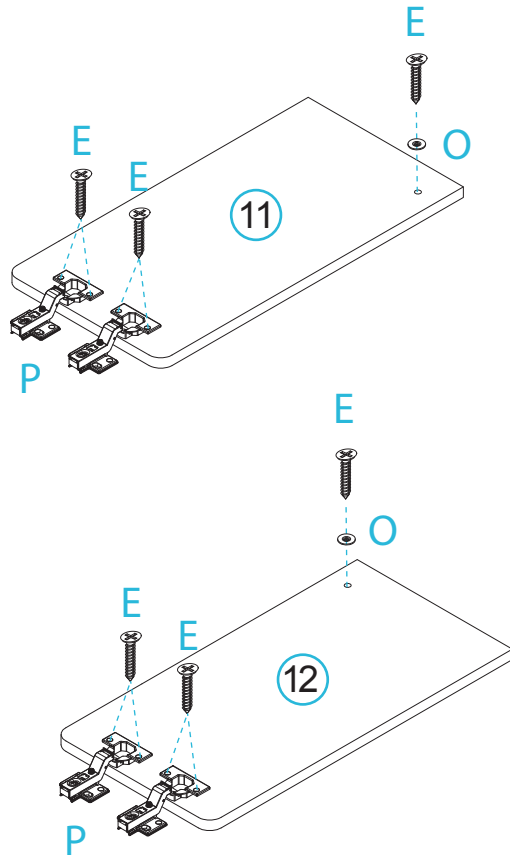
Attach 12x wedges (D) to the back of the unit as shown and secure with 12x screws (T). Tighten with a screwdriver.

Kennedy Entertainment Unit

Assembly Instructions

mocka

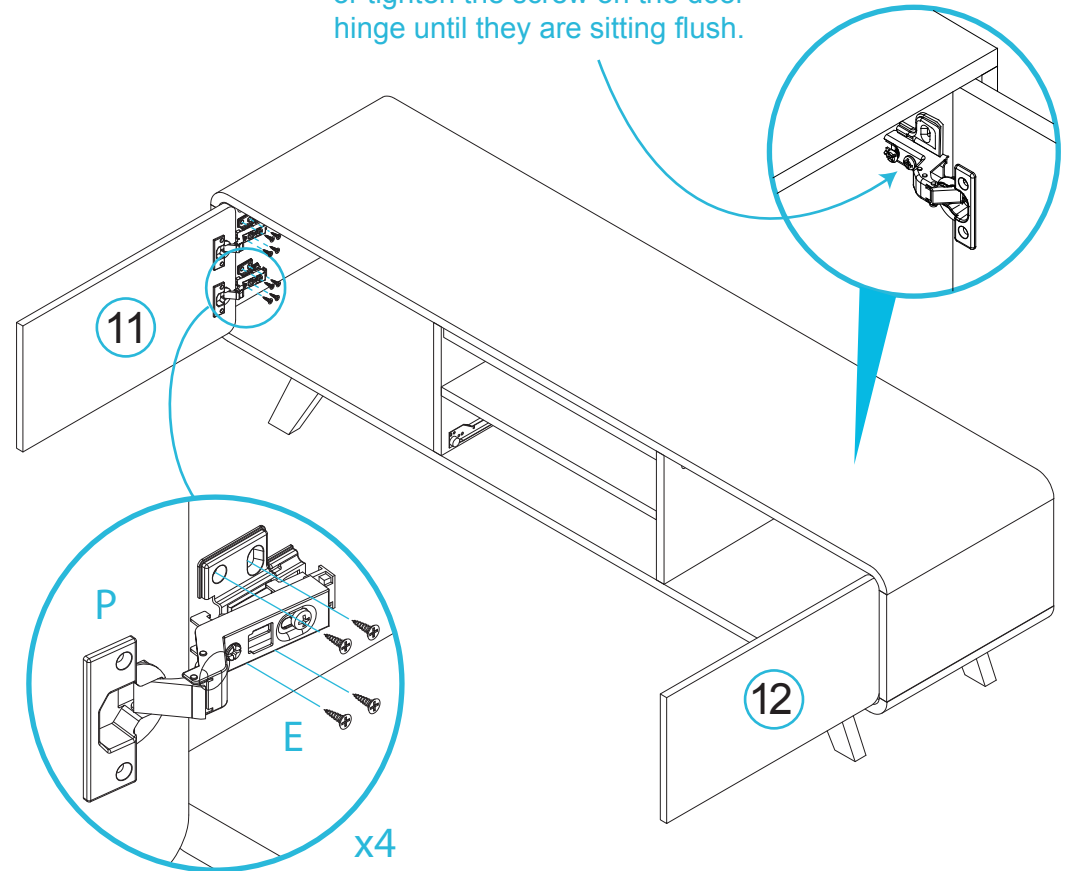
9



Attach 1x stopper (O) to door panel [11] using 1x screw (E). Attach 2x hinges (P) to panel [11] and secure with 4x screws (E). Attach 1x stopper (O) to door panel [12] using 1x screw (E). Attach 2x hinges (P) to panel [12] and secure with 4x screws (E).

10

NOTE: If the doors are uneven or there is a gap in the middle, loosen or tighten the screw on the door hinge until they are sitting flush.



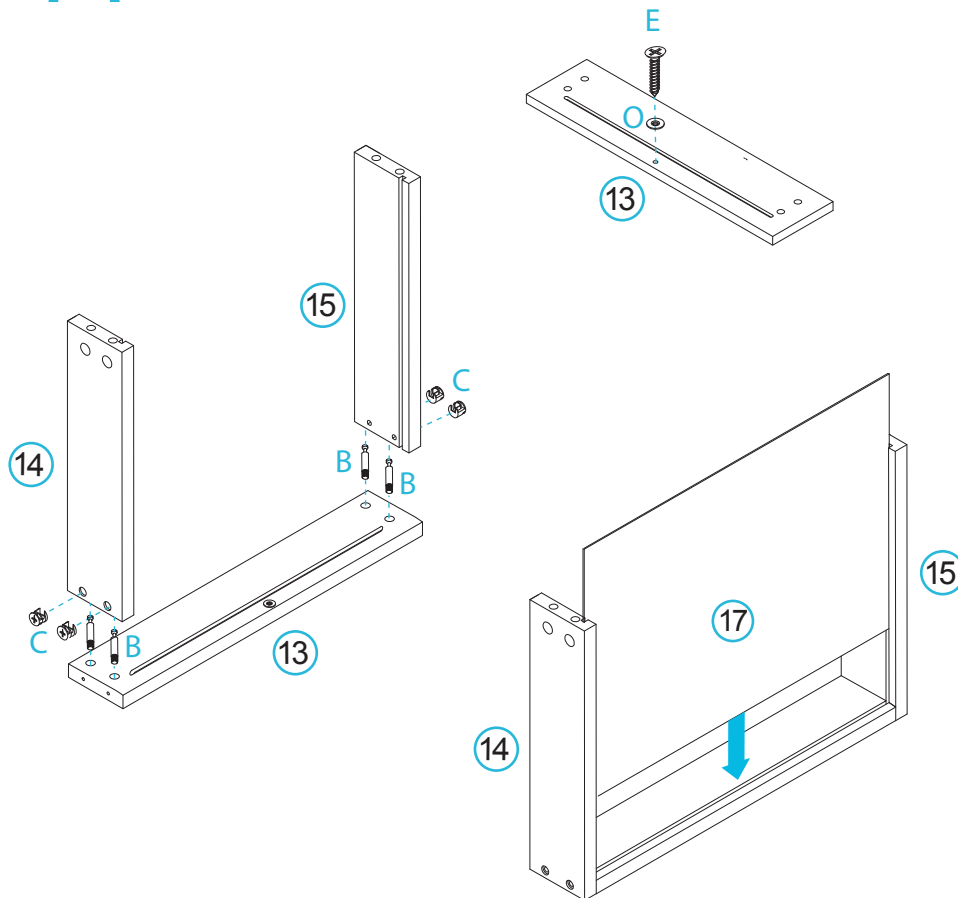
Secure door panels [11] and [12] to the main unit by attaching the other end of the hinges (P) with 16x screws (E) as shown.

Kennedy Entertainment Unit

Assembly Instructions

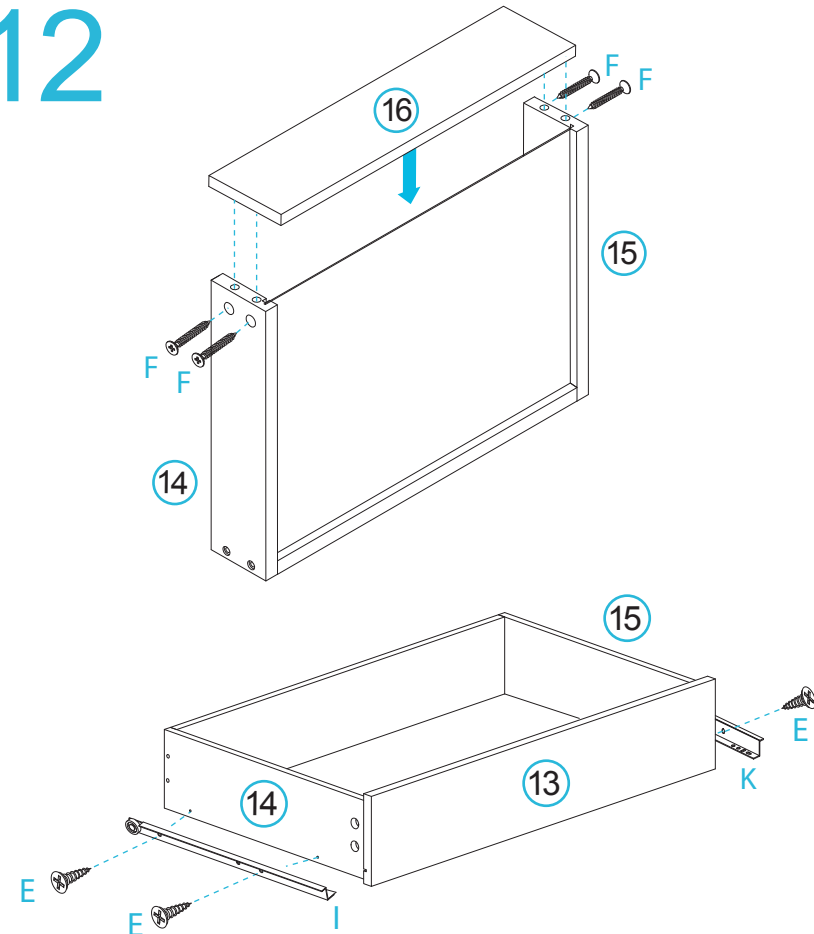
mocka

11 Drawer x1



Attach 1x stopper (O) to panel [13] using 1x screw (E). Attach side panels [14] and [15] to panel [13] using 4x bolts (B) and secure with 4x locking nuts (C). Tighten with a screwdriver. Slide panel [17] along the grooves between side panels [14] and [15] to form the base of the drawer.

12



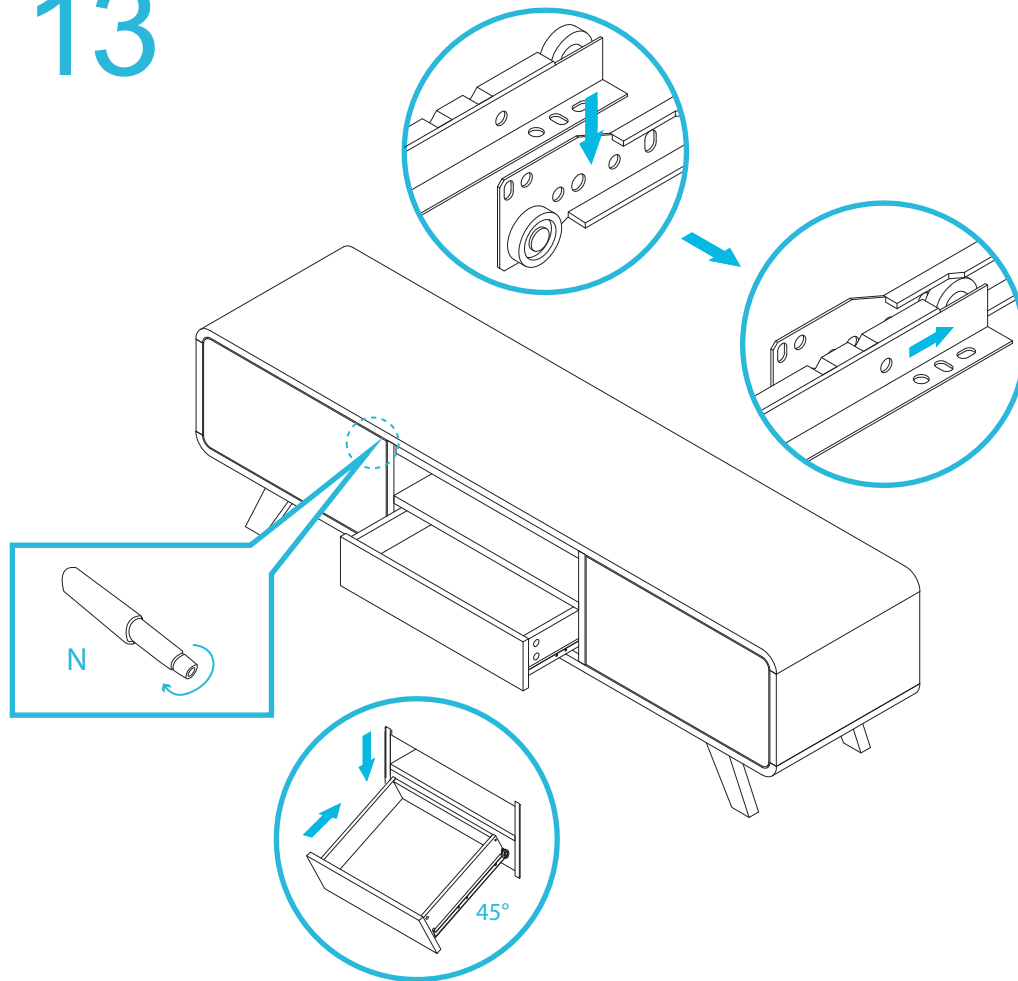
Screw on the back panel [16] using 4x screws (F). Attach 1x slide rail (I) to panel [14] and 1x slide rail (K) to panel [15] using 4x screws (E). Tighten with a screwdriver.

Kennedy Entertainment Unit

Assembly Instructions

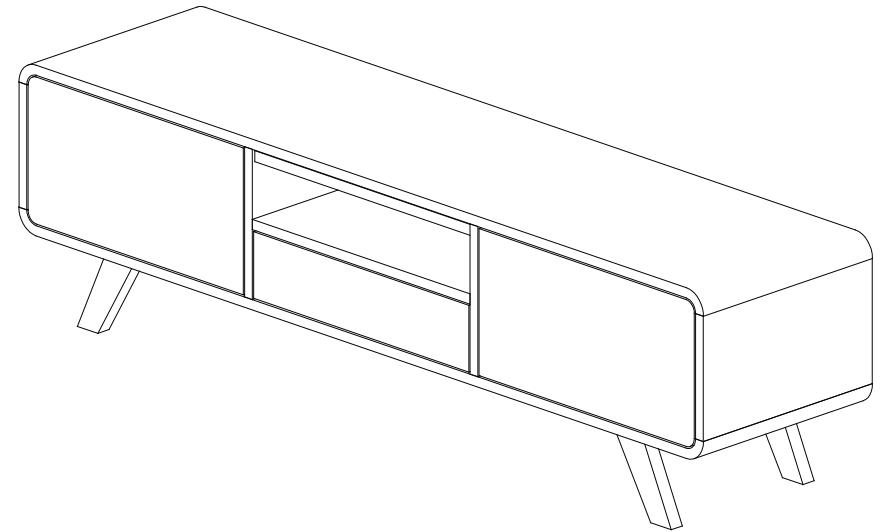
mocka

13



Insert the drawer into the unit at an upwards 45° angle. See the diagram above for the correct positioning of the slide rails. If the door is not catching or sitting flush, twist the end of the cover (N) until it catches on the stopper (O).

14



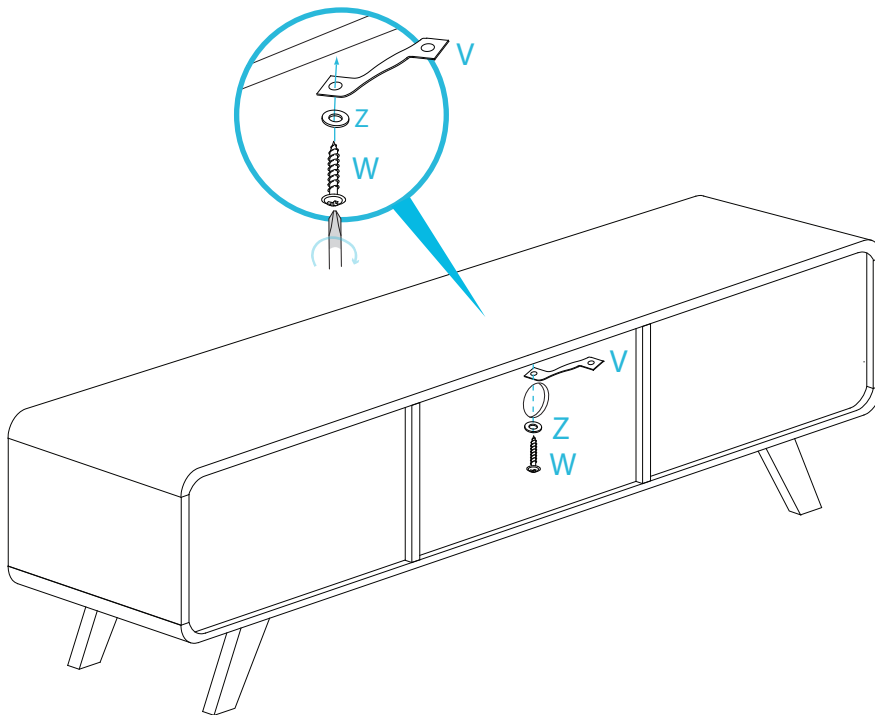
Ensure the drawer slides easily along the rails.

Kennedy Entertainment Unit

Assembly Instructions

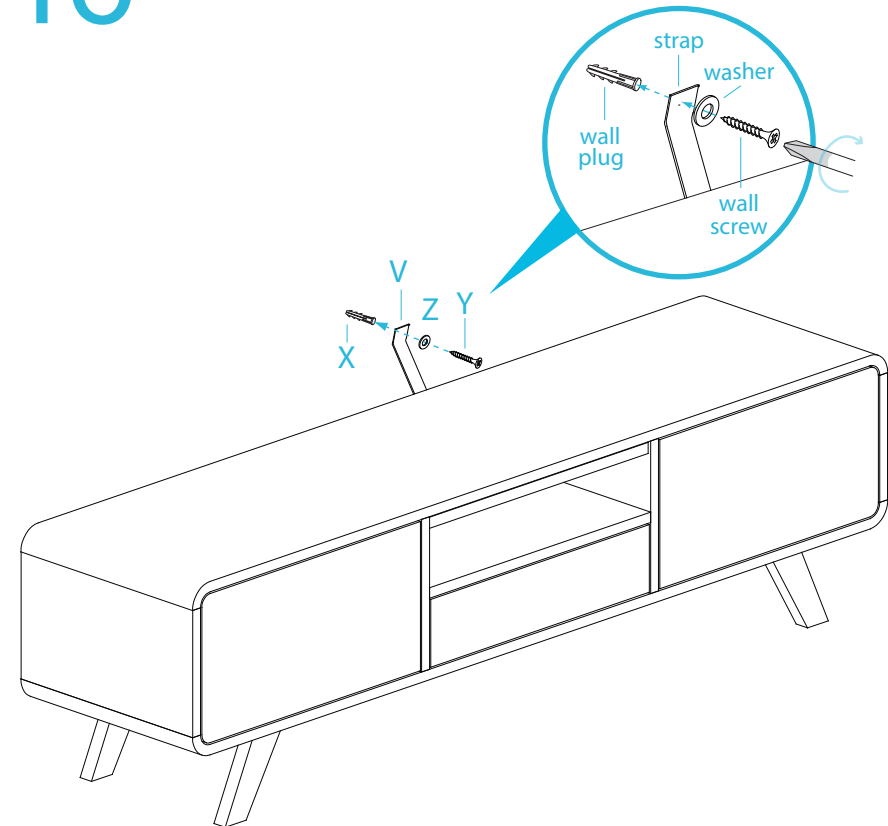
mocka

15 Wall Mount



Attach 1x safety strap (V) to the top of the back side of the unit as shown using 1x washer (Z) and 1x screw (W). Tighten with a screwdriver.

16



Once assembled lift furniture into place, do not drag. Use a drill to create a small hole lining up with the top of the safety strap (V). Fasten to wall using 1x wall plug (X), 1x washer (Z) and 1x wall screw (Y). Ensure unit is balanced and steady before use. You're done, enjoy!